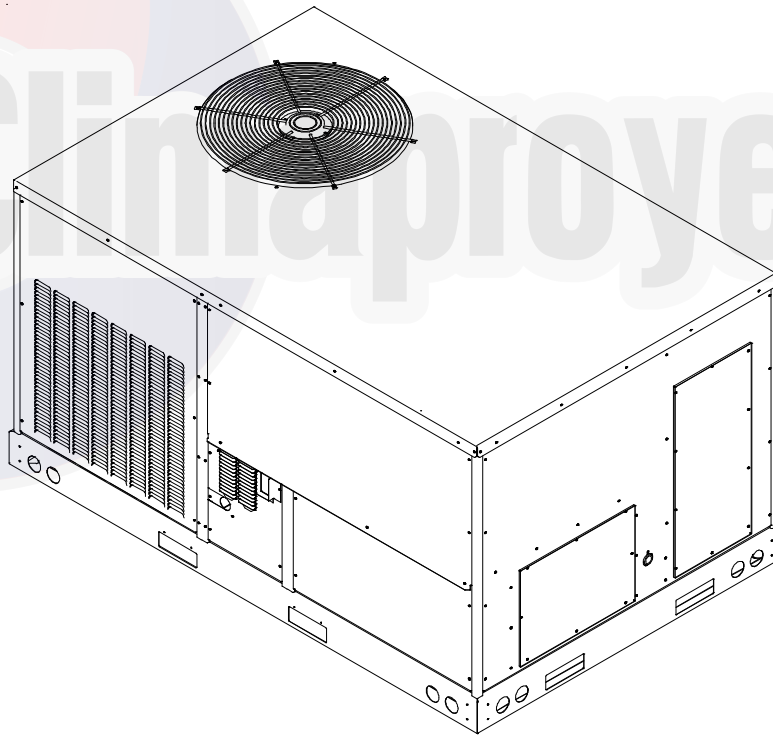


DSG SERIES

3 TO 5 TON LIGHT COMMERCIAL PACKAGED GAS UNIT WIRING DIAGRAM SUPPLEMENT FOR DSG MODELS WITH DDC CONTROLS

*For complete information and installation instructions for models with DDC controls,
see manual DK-DDC-TGD-01*.*



RECOGNIZE THIS SYMBOL AS A SAFETY PRECAUTION.

Our continuing commitment to quality products may mean a change in specifications without notice.



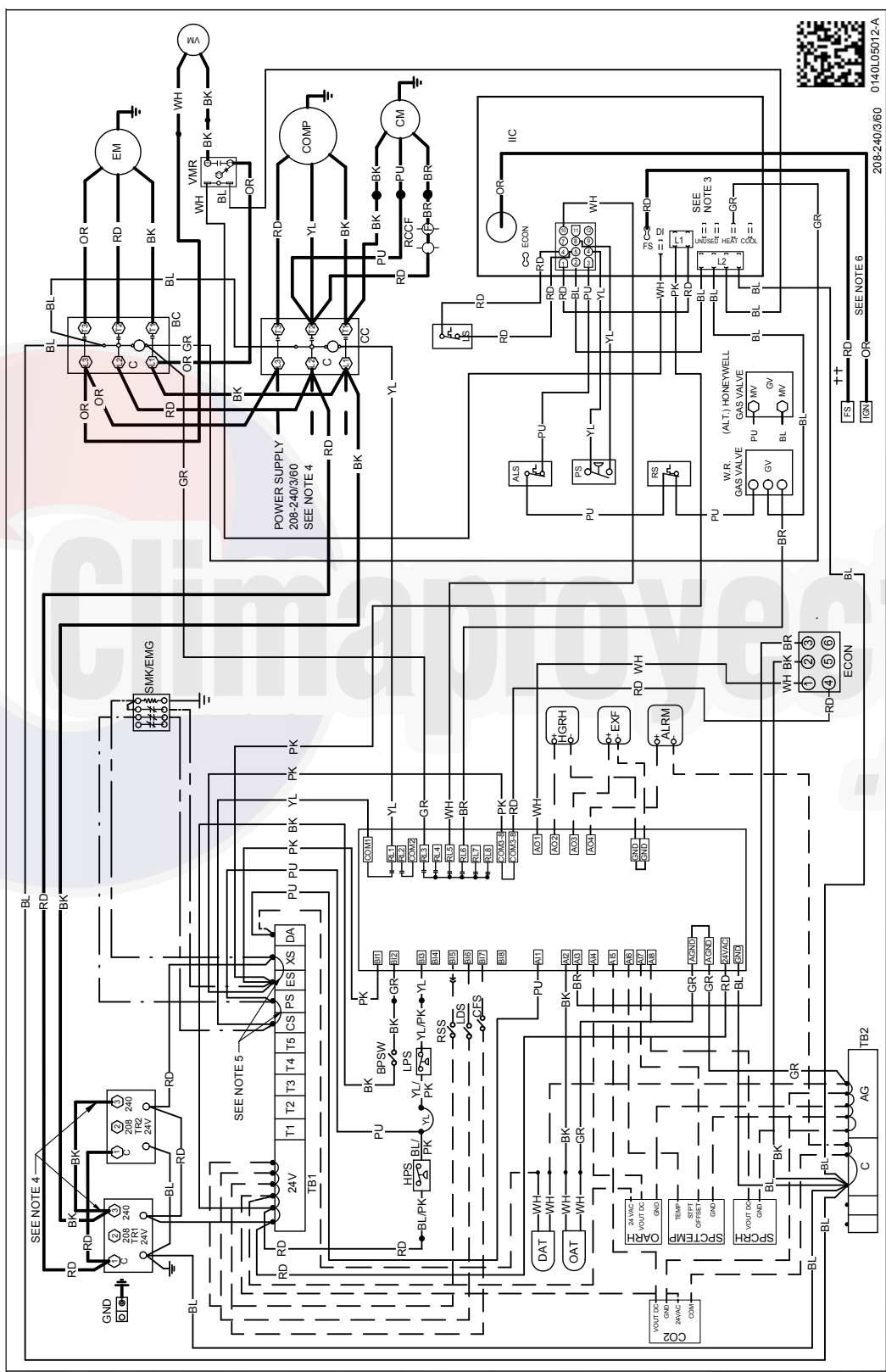
Index

DSG[036, 048]090 DSG048115 DSG060140 [208-230V/3PH/60HZ]B***	3
DSG[036, 048]090 DSG048115 DSG060140 [208-230V/3PH/60HZ]B***	4
DSG[036, 048]090 DSG048115 DSG060140 [460/575V/3PH/60HZ]B***	5
DSG[036, 048]090 DSG048115 DSG060140 [460/575V/3PH/60HZ]B***	6
DSG036045 [208-230V/1PH/60HZ]D***	7
DSG036045 [208-230V/1PH/60HZ]D***	8
DSG[036, 048]090 DSG048115 [208-230V/1PH/60HZ]D***	9
DSG[036, 048]090 DSG048115 [208-230V/1PH/60HZ]D***	10
DSG060[090, 140][208-230V/1PH/60HZ]D***	11
DSG060[090, 140][208-230V/1PH/60HZ]D***	12
DSG036045 [208-230V/3PH/60HZ]D***	13
DSG036045 [208-230V/3PH/60HZ]D***	14
DSG[036, 048]090 DSG048115 [208-230V/3PH/60HZ]D***	15
DSG[036, 048]090 DSG048115 [208-230V/3PH/60HZ]D***	16
DSG060[090, 140][208-230V/3PH/60HZ]D***	17
DSG060[090, 140] [208-230V/3PH/60HZ]D***	18

Climaproyectos
.com

WARNING

HIGH VOLTAGE!
 DISCONNECT ALL POWER BEFORE SERVICING OR INSTALLING THIS UNIT. MULTIPLE POWER SOURCES MAY BE PRESENT. FAILURE TO DO SO MAY CAUSE PROPERTY DAMAGE, PERSONAL INJURY OR DEATH.



Wiring is subject to change. Always refer to the wiring diagram on the unit for the most up-to-date wiring.

WARNING

HIGH VOLTAGE!
DISCONNECT ALL POWER BEFORE SERVICING OR INSTALLING THIS UNIT. MULTIPLE POWER SOURCES MAY BE PRESENT. FAILURE TO DO SO MAY CAUSE PROPERTY DAMAGE, PERSONAL INJURY OR DEATH.

FACTORY WIRING

— LINE VOLTAGE
 — OPTIMAL HIGH VOLTAGE
 - - - - - OPTIONAL HIGH VOLTAGE
 - - - - - OPTIONAL LOW VOLTAGE

FIELD WIRING

— HIGH VOLTAGE
 — LOW VOLTAGE

WIRE CODE

BK BLACK
 BR BROWN
 GR GREEN
 OR ORANGE
 PK PINK
 PU PURPLE
 RD RED
 WH WHITE
 YL YELLOW
 BL/PK BLUE WITH PINK STRIP
 YL/PK YELLOW WITH PINK STRIP

SCHEMATIC SYMBOL

FIELD GROUND
 FIELD SPLICE
 IGNITER
 INTERNAL TO INTEGRATED CONTROL
 JUNCTION
 OVERCURRENT PROTECTIVE DEVICE
 PLUG CONNECTION
 SWITCH (PRESS.)
 SWITCH (TEMP)
 TERMINAL

SEE UNIT RATING PLATE FOR TYPE AND SIZE OF OVER CURRENT PROTECTION

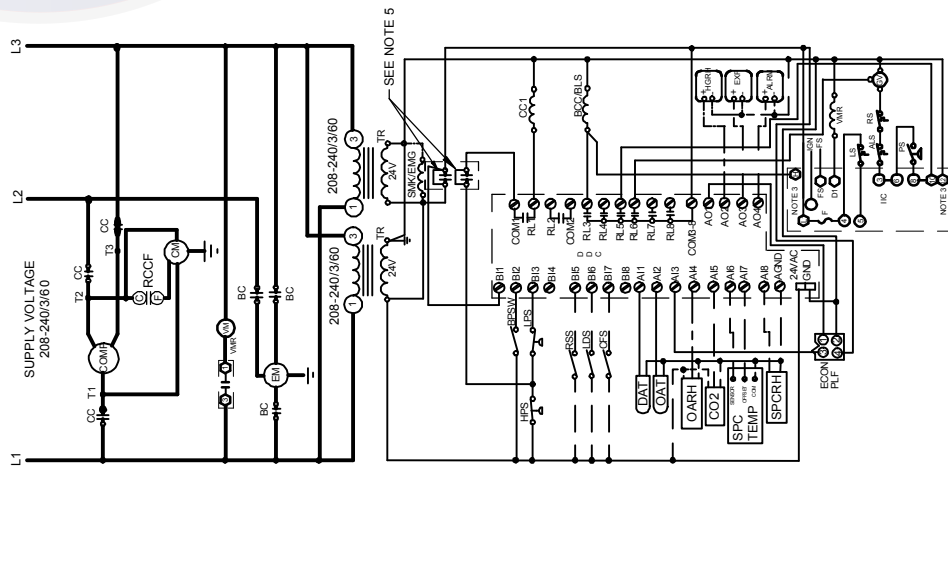
0140L05133-A
 208-240/3/60

COMPONENT LEGEND:

AGND	DC GROUND FOR ANALOG SENSORS ("AGS" ON TB2)
AL	8 ANALOG INPUTS
ALM	ALARM
BC	BLOWER CONTACTOR
BCC	BLOWER CONTACTOR
BHS	BLOWER HIGH SPEED
BIL	8 BINARY INPUTS
BLS	BLOWER LOW SPEED
BP-SW	BLOWER PROVING SWITCH
C	CRANKCASE HEATER
CC	COMPRESSOR CONTACTOR
CCR	COMPRESSOR CONTACTOR RELAY
CF	CONDENSOR FAN
CFC	CONDENSOR FAN CONTACTOR
CFS	CONDENSOR FAN SWITCH
CHR	CRANKCASE HEATER
CHS	CRANKCASE HEATER RELAY
CM	CONDENSER MOTOR
COMP	COMMON ("C" ON TB2)
CS	COMI AND SMOKE DETECTOR
CT	DEFROST THERMOSTAT
ECON	ECONOMIZER MOTOR
EM	EVAPORATOR MOTOR
EX	ECON COMS & AND SMOKE DETECTOR
EXF	EXHAUST FAN
GND	EQUIPMENT GROUND
HGRH	HOT GAS REHEAT
HPS	HIGH PRESSURE SWITCH
LDS	LOAD SHEDDING
LPS	LOW PRESSURE SWITCH
OAT	OUTDOOR AIR TEMPERATURE
OARH	OUTDOOR AIR RELATIVE HUMIDITY
PLF	FEMALE PLUG / CONNECTOR
RFC	RUN CAPACITOR FOR CONDENSER FAN
RL	RELAY
RSS	REMOTE START STOP
RVC	REVERSING VALVE COIL
SAT/DAT	SUPPLY / DISCHARGE AIR TEMPERATURE
SMK/EMG	SMOKE OR EMERGENCY SHUTDOWN
SPCTEMP	SPACE TEMPERATURE
SPCRH	SPACE RELATIVE HUMIDITY
T1-T5	MOTOR SPEED TAPS 1-5 (DIRECT DRIVEN MOTOR ONLY)
TB1-2	TERMINAL BLOCK (24V SIGNAL)
TR1-2	TRANSFORMER
XS	24 VAC TRANSFORMER & SMOKE DETECTOR

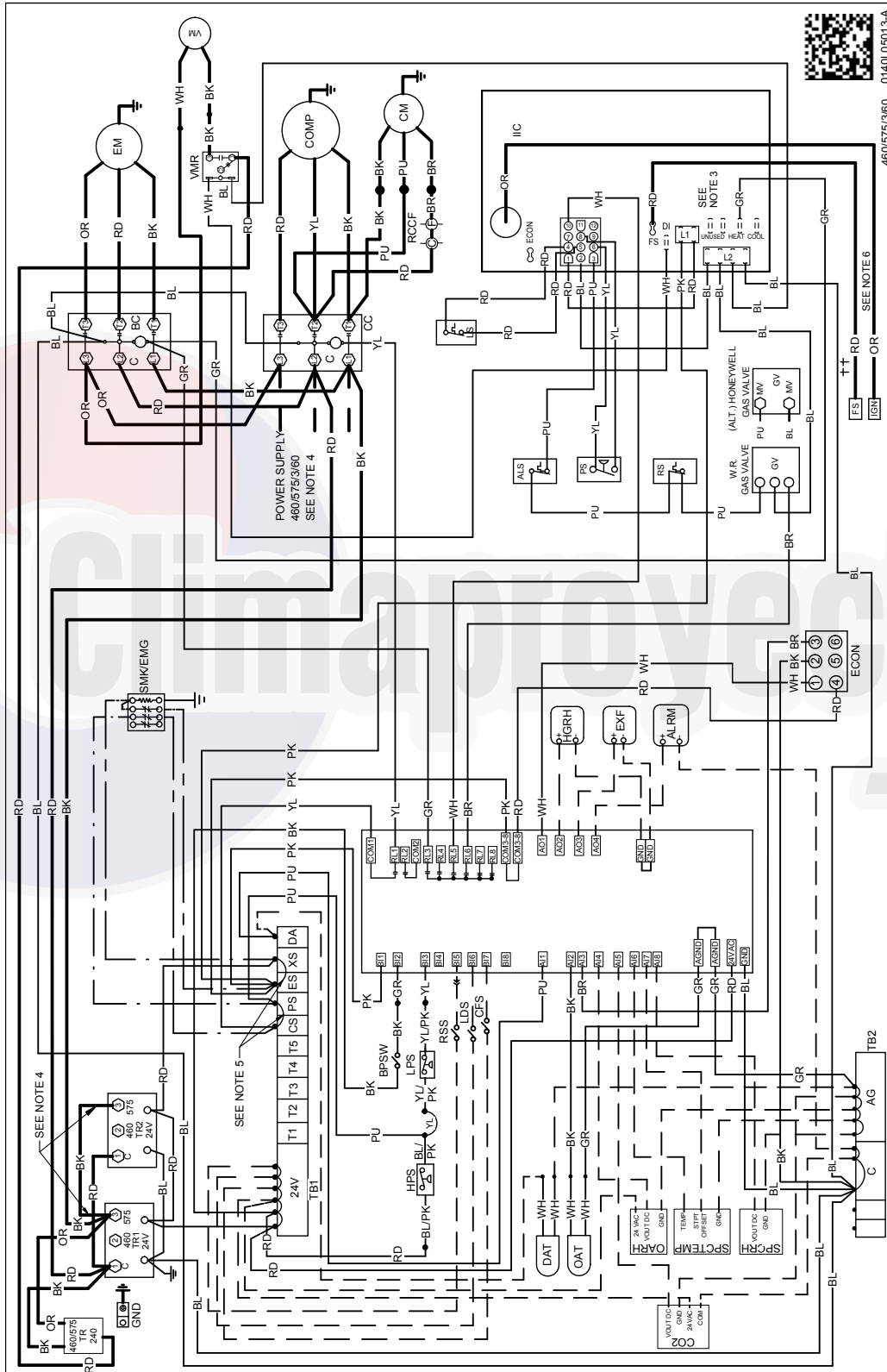
NOTES:

- REPLACEMENT WIRE MUST BE SAME SIZE AND TYPE INSULATION AS ORIGINAL (AT LEAST 105°C)
- USE COPPER CONDUCTOR ONLY.
- USE COPPER CONDUCTORS ONLY.
- USE N.E.C. CLASS 2 WIRE
- ECONOMIZER PLUG LOCATED IN THE RETURN AIR COMPARTMENT. REMOVE MALE PLUG AND ATTACH FEMALE PLUG TO THE ECONOMIZER ACCESSORY. FEMALE PLUG IS LOCATED ON THE RETURN AIR COMPARTMENT. BLACK WIRE FROM TERMINAL (C) TO TERMINAL (C) ON TRANSFORMER.
- REMOVE JUMPER IF SMOKE DETECTOR OR EMERGENCY SHUTDOWN DEVICE IS INSTALLED.
- CRANKCASE HEATER AND CRANKCASE HEATER SWITCH FACTORY EQUIPPED WHEN REQUIRED.



Wiring is subject to change. Always refer to the wiring diagram on the unit for the most up-to-date wiring.

WARNING HIGH VOLTAGE!
 DISCONNECT ALL POWER BEFORE SERVICING OR INSTALLING THIS UNIT. MULTIPLE POWER SOURCES MAY BE PRESENT. FAILURE TO DO SO MAY CAUSE PROPERTY DAMAGE, PERSONAL INJURY OR DEATH.



Wiring is subject to change. Always refer to the wiring diagram on the unit for the most up-to-date wiring.

WARNING

HIGH VOLTAGE!

DISCONNECT ALL POWER BEFORE SERVICING OR INSTALLING THIS UNIT. MULTIPLE POWER SOURCES MAY BE PRESENT. FAILURE TO DO SO MAY CAUSE PROPERTY DAMAGE, PERSONAL INJURY OR DEATH.

FACTORY WIRING

— LINE VOLTAGE
 — LOW VOLTAGE
 — OPTIONAL HIGH VOLTAGE
 - - - OPTIONAL LOW VOLTAGE

FIELD WIRING

— HIGH VOLTAGE
 - - - LOW VOLTAGE

WIRE CODE

BK BLACK
 BL BLUE
 BR BROWN
 GR GREEN
 OR ORANGE
 PK PINK
 PU PURPLE
 RD RED
 WH WHITE
 YL YELLOW

BL/PK BLUE WITH PINK STRIP
 YL/PK YELLOW WITH PINK STRIP

SCHEMATIC SYMBOL

FIELD GROUND
 FIELD SPICE
 IGNITER
 INTERNAL TO INTEGRATED CONTROL
 JUNCTION
 OVERCURRENT PROT. DEVICE
 PLUG CONNECTION
 SWITCH (PRESS.)
 SWITCH (TEMP)
 TERMINAL

SEE UNIT RATING PLATE FOR TYPE AND SIZE OF OVER CURRENT PROTECTION

460/575/3/60 0140.05134-A

COMPONENT LEGEND

AGND DC GROUND FOR ANALOG SENSORS ("AG" ON TB2)
 AL 8 ANALOG INPUTS
 ALRM ALARM
 BC BLOWER CONTACTOR
 BCC BLOWER CONTACTOR
 BHS BLOWER HIGH SPEED
 BIL 8 BINARY INPUTS
 BLS BLOWER LOW SPEED
 BPSW BLOWER PROVING SWITCH
 C CONTACTOR
 CC COMPRESSOR CONTACTOR
 CCR COMPRESSOR CONTACTOR RELAY
 CF CONDENSOR FAN
 CFC CONDENSOR FAN CONTACTOR
 CFCF CONDENSOR FAN CONTACTOR
 CH CRANKCASE HEATER
 CHH CRANKCASE HEATER
 CHS CRANKCASE HEATER SWITCH
 CM CONDENSER MOTOR
 COM COMMON ("C" ON TB2)
 COMP COMPRESSOR
 COM1 AND SMOKE DETECTOR
 CS DEFROST THERMOSTAT
 DFT ECONOMIZER
 EM EVAPORATOR MOTOR
 ECON ECON COM3-8 AND SMOKE DETECTOR
 ES EXHAUST FAN
 GND EXHAUST FAN GROUND
 HGRH HOT GAS REHEAT
 HPS HIGH PRESSURE SWITCH
 LDS LOAD SHEDDING SWITCH
 LPS LOW PRESSURE SWITCH
 OARH OUTDOOR AIR RELATIVE HUMIDITY
 OARH OUTDOOR AIR RELATIVE HUMIDITY
 PLF FEMALE PLUG / CONNECTOR
 PS HPS & SMOKE DETECTOR
 ROOF RUN CAPACITOR FOR CONDENSER FAN RELAY
 RSS REMOTE START STOP
 RVG REVERSING VALVE COIL
 SVG SMOKE VALVE DISCHARGE TEMPERATURE
 SMOKE SMOKE TEMPERATURE
 SPCTEMP SPACE TEMPERATURE
 SPCRH SPACE RELATIVE HUMIDITY
 T1-T5 MOTOR SPEED TAPS 1-5 (DIRECT DRIVEN MOTOR ONLY)
 TB1-2 TERMINAL BLOCK (24V SIGNAL)
 TR1-2 TRANSFORMER
 XS 24 VAC TRANSFORMER & SMOKE DETECTOR

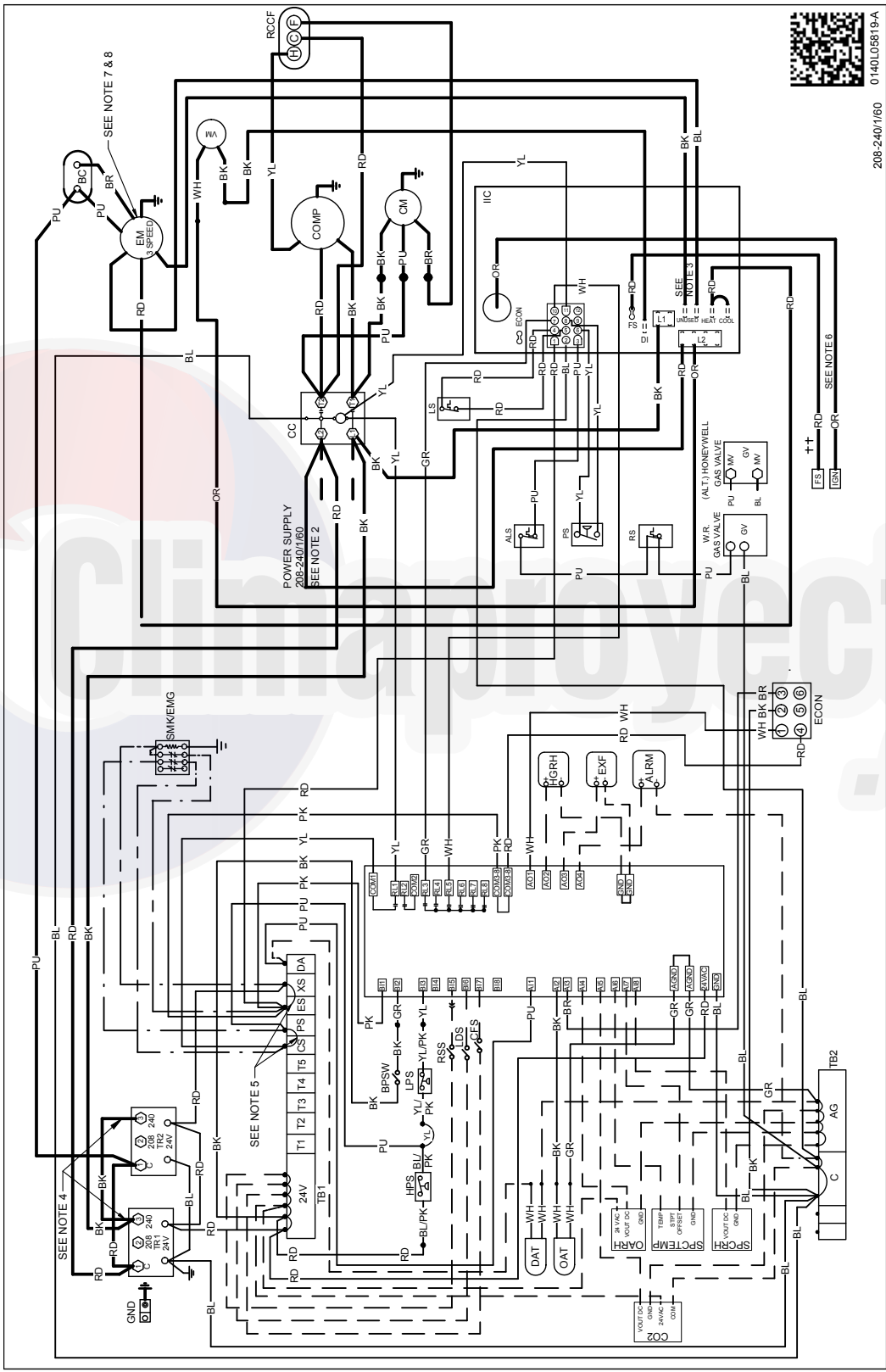
NOTES:

- REPLACE WIRE MUST BE SAME SIZE AND TYPE INSULATION AS ORIGINAL (AT LEAST 105°C) USE COPPER CONDUCTOR ONLY
- USE COPPER CONDUCTORS ONLY
- ECONOMIZER PLUG LOCATED IN THE RETURN AIR COMPARTMENT. REMOVE MALE PLUG AND ATTACH FEMALE PLUG TO THE ECONOMIZER ACCESSORY.
- FOR 460 VOLT TRANSFORMER OPERATION MOVE BLACK WIRE FROM TERMINAL (3) TO TERMINAL (2) ON TRANSFORMER
- REMOVE JUMPER IF SMOKE DETECTOR OR EMERGENCY STOP IS USED. REMOVE JUMPER AND CRANKCASE HEATER
- CRANKCASE HEATER AND CRANKCASE HEATER SWITCH FACTORY EQUIPPED WHEN REQUIRED.

SEE NOTE 5

Wiring is subject to change. Always refer to the wiring diagram on the unit for the most up-to-date wiring.

WARNING HIGH VOLTAGE!
 DISCONNECT ALL POWER BEFORE SERVICING OR INSTALLING THIS UNIT. MULTIPLE POWER SOURCES MAY BE PRESENT. FAILURE TO DO SO MAY CAUSE PROPERTY DAMAGE, PERSONAL INJURY OR DEATH.



Wiring is subject to change. Always refer to the wiring diagram on the unit for the most up-to-date wiring.

WARNING

HIGH VOLTAGE!
DISCONNECT ALL POWER BEFORE SERVICING OR INSTALLING THIS UNIT. MULTIPLE POWER SOURCES MAY BE PRESENT. FAILURE TO DO SO MAY CAUSE PROPERTY DAMAGE, PERSONAL INJURY OR DEATH.

COMPONENT LEGEND

EM EVAPORATOR MOTOR
 ES ECON COM-3-BIT AND SMOKE DETECTOR
 EXF EXHAUST FAN
 GND EQUIPMENT GROUND
 HGRH HIGH PRESSURE SWITCH
 HPS HIGH PRESSURE SWITCH
 LPS LOW PRESSURE SWITCH
 OAT OUTDOOR AIR TEMPERATURE
 OARH OUTDOOR AIR RELATIVE HUMIDITY
 PLF FEMALE PLUG / CONNECTOR
 PS HPS & SMOKE DETECTOR
 RCCF RUN CAPACITOR FOR CONDENSER FAN RELAY
 RLS REVERSE START STOP
 RVC REVERSING VALVE COIL
 SAT/DAT SUPPLY / DISCHARGE AIR TEMPERATURE
 SMOKE SMOKE OR EMERGENCY SHUTDOWN
 SPC/TEMP SMOKE TEMP
 SPCRH SMOKE RELATIVE HUMIDITY
 T1-15 MOTOR SPEED TAPS #1-5
 TB1-2 TERMINAL BLOCK (24V SIGNAL)
 TR1-2 TRANSFORMER
 XS 24 VAC TRANSFORMER & SMOKE DETECTOR

COMPONENT LEGEND

AGND DC GROUND FOR ANALOG
 AO SENSORS ("AG" ON TB2)
 AI 4 ANALOG INPUTS
 ALM 8 ANALOG INPUTS
 BHS BLOWER HIGH SPEED
 BLS 8 BINARY INPUTS
 BPSW BLOWER LOW SPEED
 CC BLOWER PROVING SWITCH
 CCR COMPRESSOR CONTACTOR
 CFS COMPRESSOR CONTACTOR RELAY
 CHS CLOGGED FILTER SWITCH
 CHS CRANKCASE HEATER SWITCH
 CM CONDENSER MOTOR
 COM COMMON ("C" ON TB2)
 COMP COMPRESSOR
 CS COMPRESSOR SMOKE DETECTOR
 CS1 COMPRESSOR SMOKE DETECTOR
 ECN ECON
 EV EVAPORATOR
 G1 GAS VALVE

NOTES:

- REPLACEMENT WIRE MUST BE SAME SIZE AND TYPE INSULATION AS ORIGINAL (AT LEAST 105°C) USE COPPER CONDUCTOR ONLY.
- USE COPPER CONDUCTORS ONLY.
- USE N.E.C. CLASS 2 WIRE.
- ECONOMIZER PLUG LOCATED IN THE RETURN AIR COMPARTMENT. REMOVE MALE PLUG AND ATTACH FEMALE PLUG TO THE ECONOMIZER ACCESSORY.
- FOR 208 VOLT TRANSFORMER OPERATION MOVE BLACK WIRE FROM TERMINAL (3) TO TERMINAL (4) ON TRANSFORMER.
- REMOVE JUMPER IF SMOKE DETECTOR OR EMERGENCY SHUTDOWN DEVICES INSTALLED. CRANKCASE HEATER SWITCH FACTORY EQUIPPED WHEN REQUIRED.
- SWITCH FACTORY EQUIPPED WHEN REQUIRED.
- TO CHANGE EVAP MOTOR SPEED - SEE TABLE 2.
- FOR ALTERNATE MOTOR WIRING SEE DIAGRAM 1.

FACTORY WIRING

— LINE VOLTAGE
 — LOW VOLTAGE
 - - - OPTIONAL HIGH VOLTAGE
 - - - OPTIONAL LOW VOLTAGE

FIELD WIRING

— HIGH VOLTAGE
 — LOW VOLTAGE

WIRE CODE

BK BLACK
 BL BLUE
 BR BROWN
 GR GREEN
 OR ORANGE
 PU PURPLE
 RD RED
 WH WHITE
 YL YELLOW
 BLPK BLUE WITH PINK STRIPE
 YLPK YELLOW WITH PINK STRIPE

SCHEMATIC SYMBOL

FIELD GROUND
 FIELD SPLICE
 IGNITER
 JUNCTION
 OVERCURRENT PROT. DEVICE
 PLUG CONNECTION
 SWITCH (PRESS)
 SWITCH (TEMP)
 TERMINAL

208-240/1/60

0140.05859-A

DIAGRAM 1: ALTERNATE MOTOR WIRING

REPLACEMENT WIRE MUST BE SAME SIZE AND TYPE INSULATION AS ORIGINAL (AT LEAST 105°C) USE COPPER CONDUCTOR ONLY.

USE N.E.C. CLASS 2 WIRE.

ECONOMIZER PLUG LOCATED IN THE RETURN AIR COMPARTMENT. REMOVE MALE PLUG AND ATTACH FEMALE PLUG TO THE ECONOMIZER ACCESSORY.

FOR 208 VOLT TRANSFORMER OPERATION MOVE BLACK WIRE FROM TERMINAL (3) TO TERMINAL (4) ON TRANSFORMER.

REMOVE JUMPER IF SMOKE DETECTOR OR EMERGENCY SHUTDOWN DEVICES INSTALLED. CRANKCASE HEATER SWITCH FACTORY EQUIPPED WHEN REQUIRED.

SWITCH FACTORY EQUIPPED WHEN REQUIRED.

TO CHANGE EVAP MOTOR SPEED - SEE TABLE 2.

FOR ALTERNATE MOTOR WIRING SEE DIAGRAM 1.

TABLE 1: ALTERNATE MOTOR WIRING

WIRE COLOR	TERMINATION
BK	TERMINAL (4)
BL	TERMINAL (3)
BR	TERMINAL (3)
GR	TERMINAL (3)
OR	TERMINAL (3)
PU	TERMINAL (3)
RD	TERMINAL (3)
WH	TERMINAL (3)
YL	TERMINAL (3)

TABLE 2: SPEED TAPS

SPEED TAP	WIRE COLOR	WIRE SIZE
1	BK	18 AWG
2	BL	18 AWG
3	BR	18 AWG
4	GR	18 AWG
5	OR	18 AWG
6	PU	18 AWG
7	RD	18 AWG
8	WH	18 AWG
9	YL	18 AWG

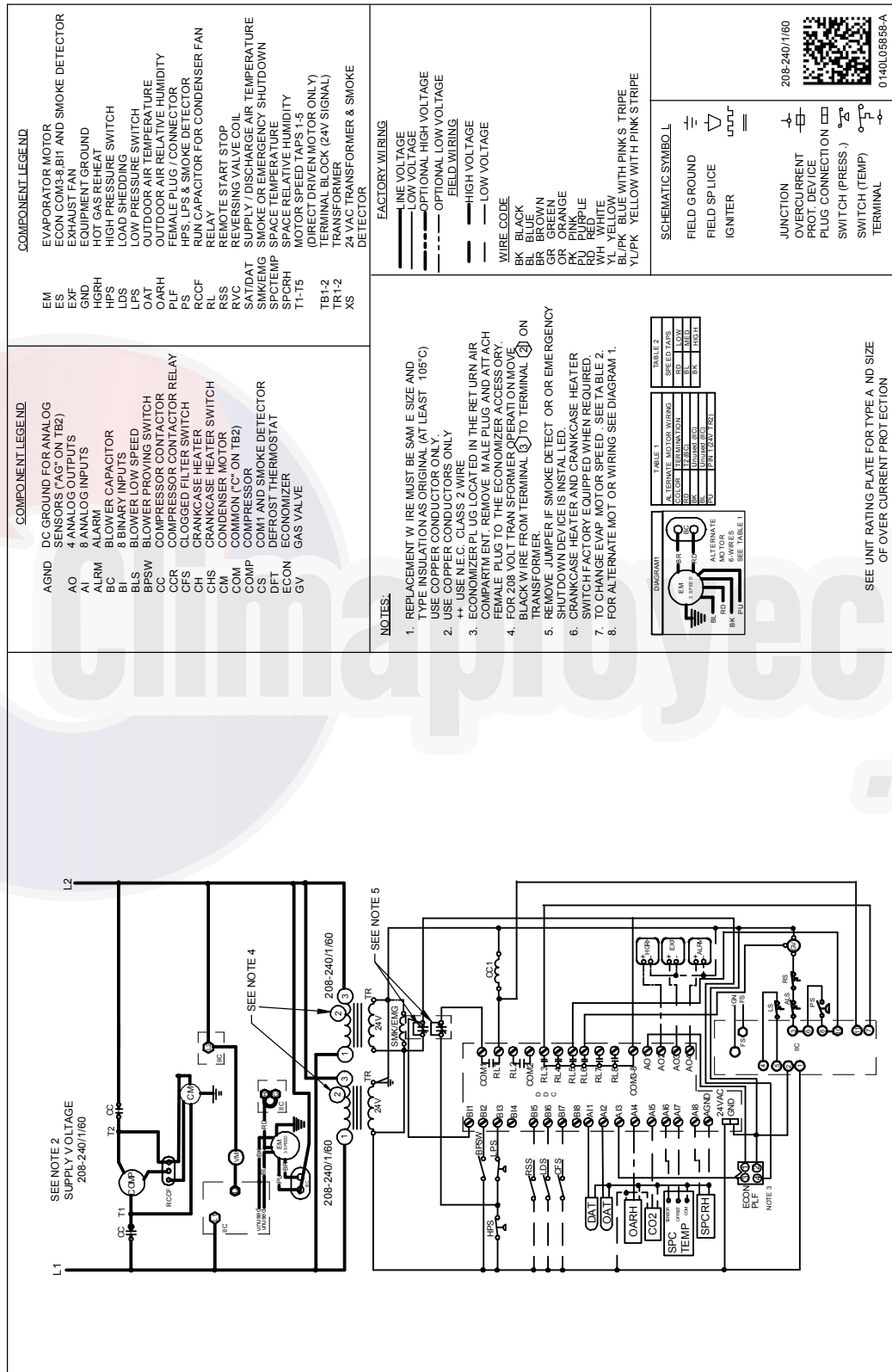
DIAGRAM 2: UNIT RATING PLATE FOR TYPE AND SIZE OF OVER CURRENT PROTECTION

DIAGRAM 3: WIRING DIAGRAM

Wiring is subject to change. Always refer to the wiring diagram on the unit for the most up-to-date wiring.

WARNING

HIGH VOLTAGE!
DISCONNECT ALL POWER BEFORE SERVICING OR INSTALLING THIS UNIT. MULTIPLE POWER SOURCES MAY BE PRESENT. FAILURE TO DO SO MAY CAUSE PROPERTY DAMAGE, PERSONAL INJURY OR DEATH.



COMPONENT LEGEND

EM	EVAPORATOR MOTOR
ES	ECON COM3-8 BIT AND SMOKE DETECTOR
EXF	EXHAUST FAN
GND	EQUIPMENT GROUND
HGRH	HOT GAS REHEAT
HPS	HIGH PRESSURE SWITCH
LDS	LOAD SHEDDING
LPS	LOW PRESSURE SWITCH
OD	OUTDOOR AIR RELATIVE HUMIDITY
OARH	OUTDOOR AIR RELATIVE HUMIDITY
PLF	FEMALE PLUG / CONNECTOR
PS	HPS LPS & SMOKE DETECTOR
RCCF	RUN CAPACITOR FOR CONDENSER FAN
RL	RELAY
RSS	REMOTE START STOP
RVC	REVERSING VALVE COIL
SAT/DAT	SUPPLY / DISCHARGE AIR TEMPERATURE
SMK/EMG	SMOKE OR EMERGENCY SHUTDOWN
SPC/TEMP	SPACE TEMPERATURE
SPORH	SPACE RELATIVE HUMIDITY
T1-15	TERMINAL BLOCK (24V SIGNAL)
TR1-2	TRANSFORMER
XS	24 VAC TRANSFORMER & SMOKE DETECTOR

COMPONENT LEGEND

AGND	DC GROUND FOR ANALOG
AO	SENSORS ("AG" ON TB2)
AI	4 ANALOG OUTPUTS
BC	8 ANALOG INPUTS
ALARM	ALARM
BI	BLOWER CAPACITOR
BLS	8 BINARY INPUTS
BSW	BLOWER SPEED SWITCH
CCR	COMPRESSOR CONTACTOR
CFS	COMPRESSOR CONTACTOR RELAY
CHS	CLOGGED FILTER SWITCH
CHS	CRANKCASE HEATER SWITCH
CM	CONDENSER MOTOR
COM	COMMON ("C" ON TB2)
COMP	COMPRESSOR
COM1	COM1 AND SMOKE DETECTOR
CS	DEFROST THERMOSTAT
DFT	DEFROST THERMOSTAT
ECON	ECONOMIZER
GV	GAS VALVE

FACTORY WIRING

—	LINE VOLTAGE
—	LOW VOLTAGE
—	OPTIONAL HIGH VOLTAGE
—	OPTIONAL LOW VOLTAGE
—	FIELD WIRING
—	HIGH VOLTAGE
—	LOW VOLTAGE

WIRE CODE

BK	BLACK
BL	BLUE
BR	BROWN
GR	GREEN
OR	ORANGE
PU	PURPLE
RD	RED
WH	WHITE
YL	YELLOW
YLPK	YELLOW WITH PINK STRIPE
YLPK	YELLOW WITH PINK STRIPE

NOTES:

- REPLACEMENT WIRE MUST BE SAME SIZE AND TYPE. USE COPPER CONDUCTOR ONLY (AT LEAST 105°C).
- USE COPPER CONDUCTOR ONLY.
- USE N.E.C. CLASS 2 WIRE.
- ECONOMIZER PLUG LOCATED IN THE RETURN AIR COMPARTMENT. REMOVE MALE PLUG AND ATTACH FEMALE PLUG TO THE ECONOMIZER ACCESSORY.
- FOR 208 VOLT TRANSFORMER OPERATION ON MOVE, BLACK WIRE FROM TERMINAL (5) TO TERMINAL (2) ON TRANSFORMER.
- REMOVE JUMPER IF SMOKE DETECT OR OR EMERGENCY SHUTDOWN DEVICE IS INSTALLED. CRANKCASE HEATER SHALL BE INSTALLED WHEN REQUIRED.
- SWITCH FACTORY MOTOR SPEED. SEE TABLE 2.
- TO CHANGE EVAP MOTOR SPEED. SEE TABLE 2.
- FOR ALTERNATE MOTOR WIRING SEE DIAGRAM 1.

SCHEMATIC SYMBOL

⊖	FIELD GROUND
⊖	FIELD SP LICE
⊖	IGNITER
⊖	JUNCTION
⊖	OVERCURRENT PROT. DEVICE
⊖	PLUG CONNECTION
⊖	SWITCH (PRESS.)
⊖	SWITCH (TEMP)
⊖	TERMINAL

TABLE 1

TERMINAL	WIRING	SIZE (D.F.S.)
EM	WIRE	18 AWG
AI	WIRE	18 AWG
BC	WIRE	18 AWG
BLS	WIRE	18 AWG
BSW	WIRE	18 AWG
CCR	WIRE	18 AWG
CFS	WIRE	18 AWG
CHS	WIRE	18 AWG
CM	WIRE	18 AWG
COM	WIRE	18 AWG
COMP	WIRE	18 AWG
COM1	WIRE	18 AWG
CS	WIRE	18 AWG
DFT	WIRE	18 AWG
ECON	WIRE	18 AWG
GV	WIRE	18 AWG

TABLE 2

WIRE	SIZE (D.F.S.)
EM	18 AWG
AI	18 AWG
BC	18 AWG
BLS	18 AWG
BSW	18 AWG
CCR	18 AWG
CFS	18 AWG
CHS	18 AWG
CM	18 AWG
COM	18 AWG
COMP	18 AWG
COM1	18 AWG
CS	18 AWG
DFT	18 AWG
ECON	18 AWG
GV	18 AWG

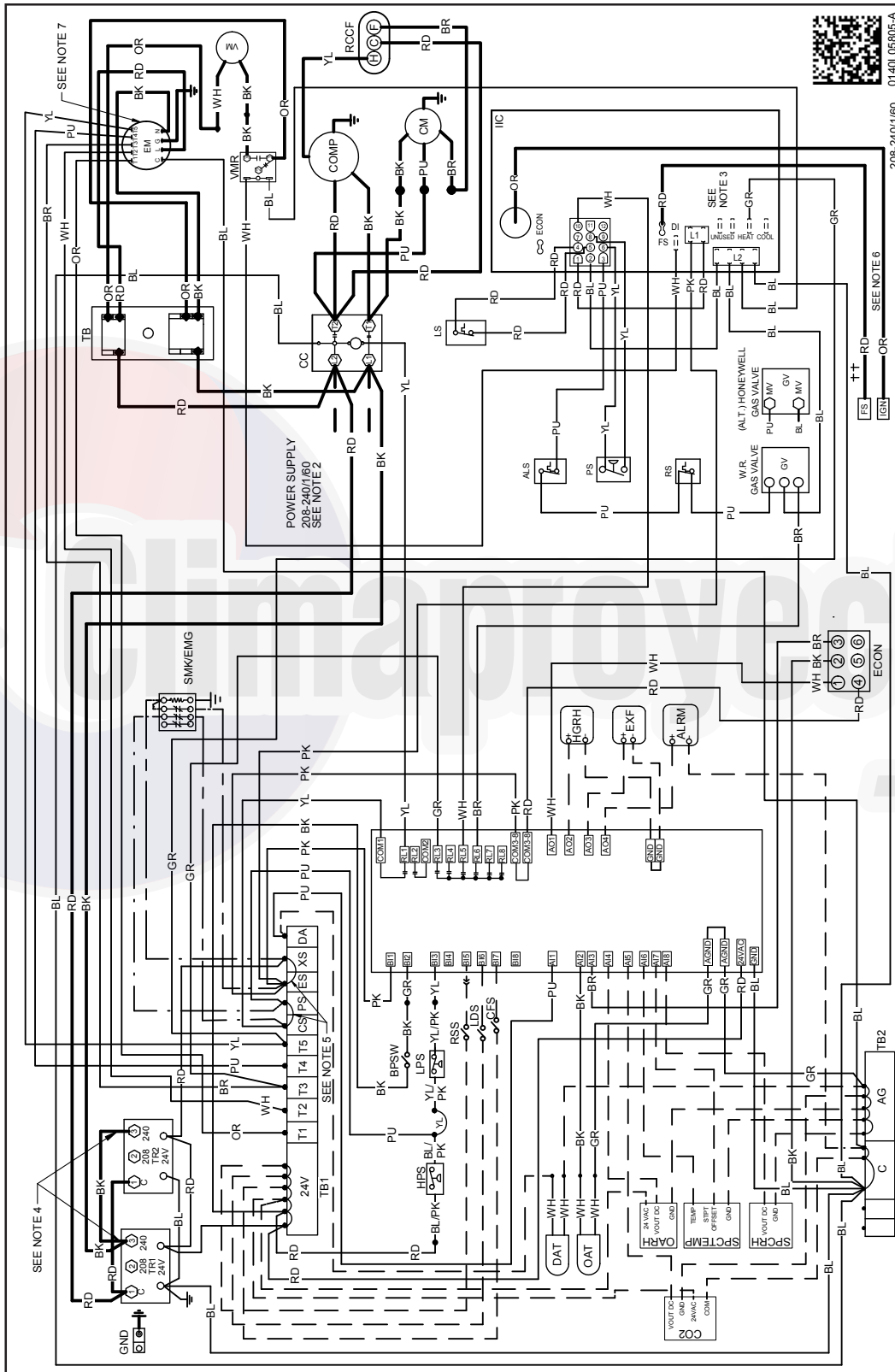
TABLE 3

WIRE	SIZE (D.F.S.)
EM	18 AWG
AI	18 AWG
BC	18 AWG
BLS	18 AWG
BSW	18 AWG
CCR	18 AWG
CFS	18 AWG
CHS	18 AWG
CM	18 AWG
COM	18 AWG
COMP	18 AWG
COM1	18 AWG
CS	18 AWG
DFT	18 AWG
ECON	18 AWG
GV	18 AWG

Wiring is subject to change. Always refer to the wiring diagram on the unit for the most up-to-date wiring.

WARNING

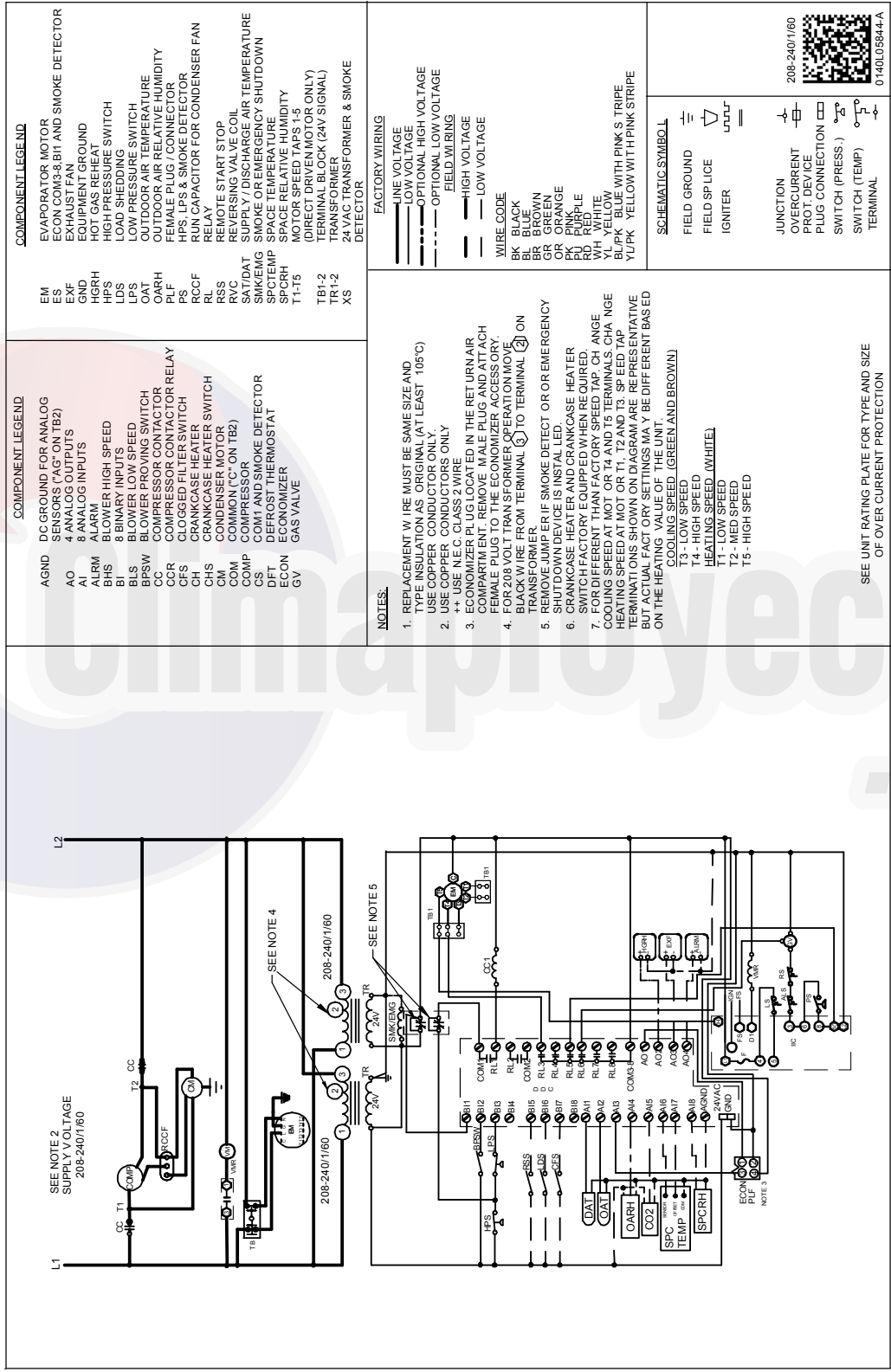
HIGH VOLTAGE!
DISCONNECT ALL POWER BEFORE SERVICING OR INSTALLING THIS UNIT. MULTIPLE POWER SOURCES MAY BE PRESENT. FAILURE TO DO SO MAY CAUSE PROPERTY DAMAGE, PERSONAL INJURY OR DEATH.



Wiring is subject to change. Always refer to the wiring diagram on the unit for the most up-to-date wiring.

WARNING

HIGH VOLTAGE!
DISCONNECT ALL POWER BEFORE SERVICING OR INSTALLING THIS UNIT. MULTIPLE POWER SOURCES MAY BE PRESENT. FAILURE TO DO SO MAY CAUSE PROPERTY DAMAGE, PERSONAL INJURY OR DEATH.



COMPONENT LEGEND

EM	EVAPORATOR MOTOR
ES	ECON COM1 & B1 AND SMOKE DETECTOR
EXF	EXHAUST FAN
GND	EQUIPMENT GROUND
HGRH	HOT GAS REHEAT
HPS	HIGH PRESSURE SWITCH
LDS	LOAD SHEDDING
LPS	LOW PRESSURE SWITCH
OAT	OUTDOOR AIR TEMPERATURE
OARH	OUTDOOR AIR RELATIVE HUMIDITY
PLF	FEMALE PLUG CONNECTOR
PLF	PLUG CONNECTOR
RCCF	RUN CAPACITOR FOR CONDENSER FAN RELAY
RCCF	RUN CAPACITOR FOR CONDENSER FAN RELAY
RSS	REMOTE START STOP
RVC	REVERSING VALVE COIL
SAT/DAT	SUPPLY / DISCHARGE AIR TEMPERATURE
SMK/EMG	SMOKE OR EMERGENCY SHUTDOWN
SPACE	SPACE TEMPERATURE
SPCRH	SPACE RELATIVE HUMIDITY
T1-T5	MOTOR SPEED TAPS 1-5
TB1-2	TRANSFORMER TAP (24V SIGNAL)
TB1-2	TRANSFORMER
XS	24VAC TRANSFORMER & SMOKE DETECTOR

COMPONENT LEGEND

AGND	DC GROUND FOR ANALOG
AO	SENSORS ("AG" ON TB2)
AI	4 ANALOG OUTPUTS
ALRM	8 ANALOG INPUTS
BHS	BLOWER HIGH SPEED
BI	8 BINARY INPUTS
BLS	BLOWER LOW SPEED
BPSW	BLOWER PROWING SWITCH
CCR	COMPRESSOR CONTACTOR
CHS	CLOGGED FILTER SWITCH
CHS	CRANKCASE HEATER SWITCH
CM	CONDENSER MOTOR
COM	COMMON ("C" ON TB2)
COMP	COMPRESSOR
CS	COM1 AND SMOKE DETECTOR
DFT	DEFROST THERMOSTAT
ECON	ECONOMIZER
GV	GAS VALVE

FACTORY WIRING

—	LINE VOLTAGE
—	LOW VOLTAGE
—	OPTIONAL HIGH VOLTAGE
—	FIELD WIRING
—	HIGH VOLTAGE
—	LOW VOLTAGE

WIRE CODE

BK	BLACK
BL	BLUE
BR	BROWN
GR	GREEN
OR	ORANGE
PK	PINK
PU	PURPLE
RD	RED
WH	WHITE
YL	YELLOW
BL/PK	BLUE WITH PINK STRIPE
YU/PK	YELLOW WITH PINK STRIPE

NOTES:

- REPLACEMENT WIRE MUST BE SAME SIZE AND LENGTH AS ORIGINAL (AT LEAST 105°C) USE COPPER AND COPPER ONLY
- USE COPPER CONDUCTORS ONLY
- ++ USE N.E.C. CLASS 2 WIRE
- ECONOMIZER PLUG LOCATED IN THE RETURN AIR COMPARTMENT. REMOVE MALE PLUG AND ATTACH FEMALE PLUG TO THE ECONOMIZER ACCESSORY.
- FOR 208 VOLT TRANSFORMER OPERATION MOVE BLACK WIRE FROM TERMINAL (5) TO TERMINAL (2) ON TRANSFORMER
- REMOVE JUMPER IF SMOKE DETECT OR OR EMERGENCY TRANSFORMER IS INSTALLED
- CRANKCASE HEATER CRANKCASE HEATER SWITCH FACTORY EQUIPED WHEN REQUIRED
- FOR DIFFERENT THAN FACTORY SPEED TAP CHANGE COOLING SPEED AT MOT OR T4 AND T5 TERMINALS CHANGE HEATING SPEED AT MOT OR T1, T2 AND T3. SPEED TAP TERMINATIONS SHOWN ON DIAGRAM ARE REPRESENTATIVE BUT ACTUAL FACTORY SETTINGS MAY BE DIFFERENT BASED ON THE HEATING VALUE OF THE UNIT.

COOLING SPEED (GREEN AND BROWN)
 T3 - LOW SPEED
 T4 - HIGH SPEED
 T5 - HEATING SPEED (WHITE)
 T1 - LOW SPEED
 T2 - MED SPEED
 T5 - HIGH SPEED

SCHEMATIC SYMBOL

—	FIELD GROUND
—	FIELD SP LICE
—	IGNITER
—	JUNCTION
—	OVERCURRENT
—	PROT. DEVICE
—	PLUG CONNECTION
—	SWITCH (PRESS)
—	SWITCH (TEMP)
—	TERMINAL

208-240/1160

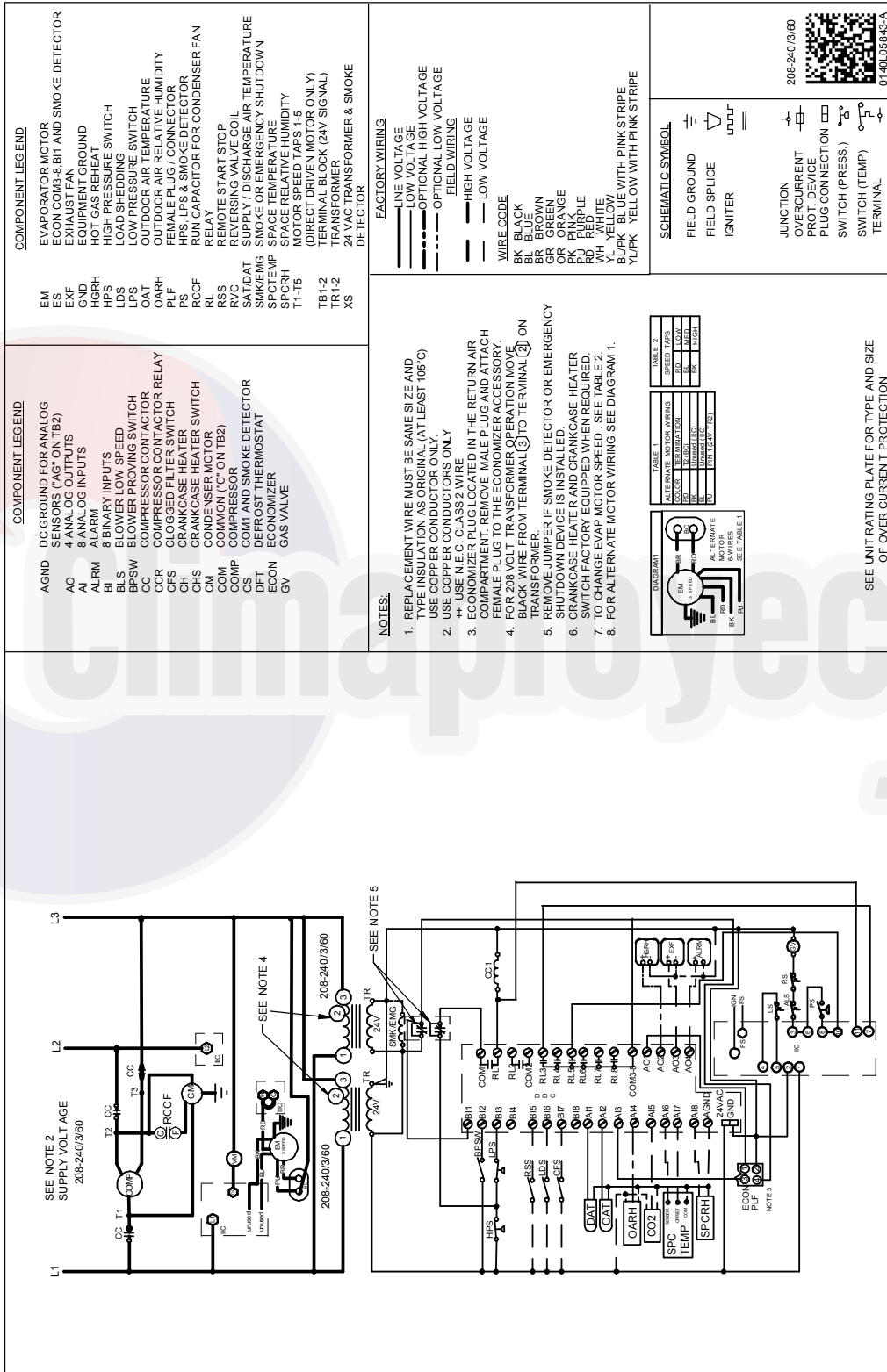
0140L05644-A

SEE UNIT RATING PLATE FOR TYPE AND SIZE OF OVER CURRENT PROTECTION

Wiring is subject to change. Always refer to the wiring diagram on the unit for the most up-to-date wiring.

WARNING

HIGH VOLTAGE!
DISCONNECT ALL POWER BEFORE SERVICING OR INSTALLING THIS UNIT. MULTIPLE POWER SOURCES MAY BE PRESENT. FAILURE TO DO SO MAY CAUSE PROPERTY DAMAGE, PERSONAL INJURY OR DEATH.

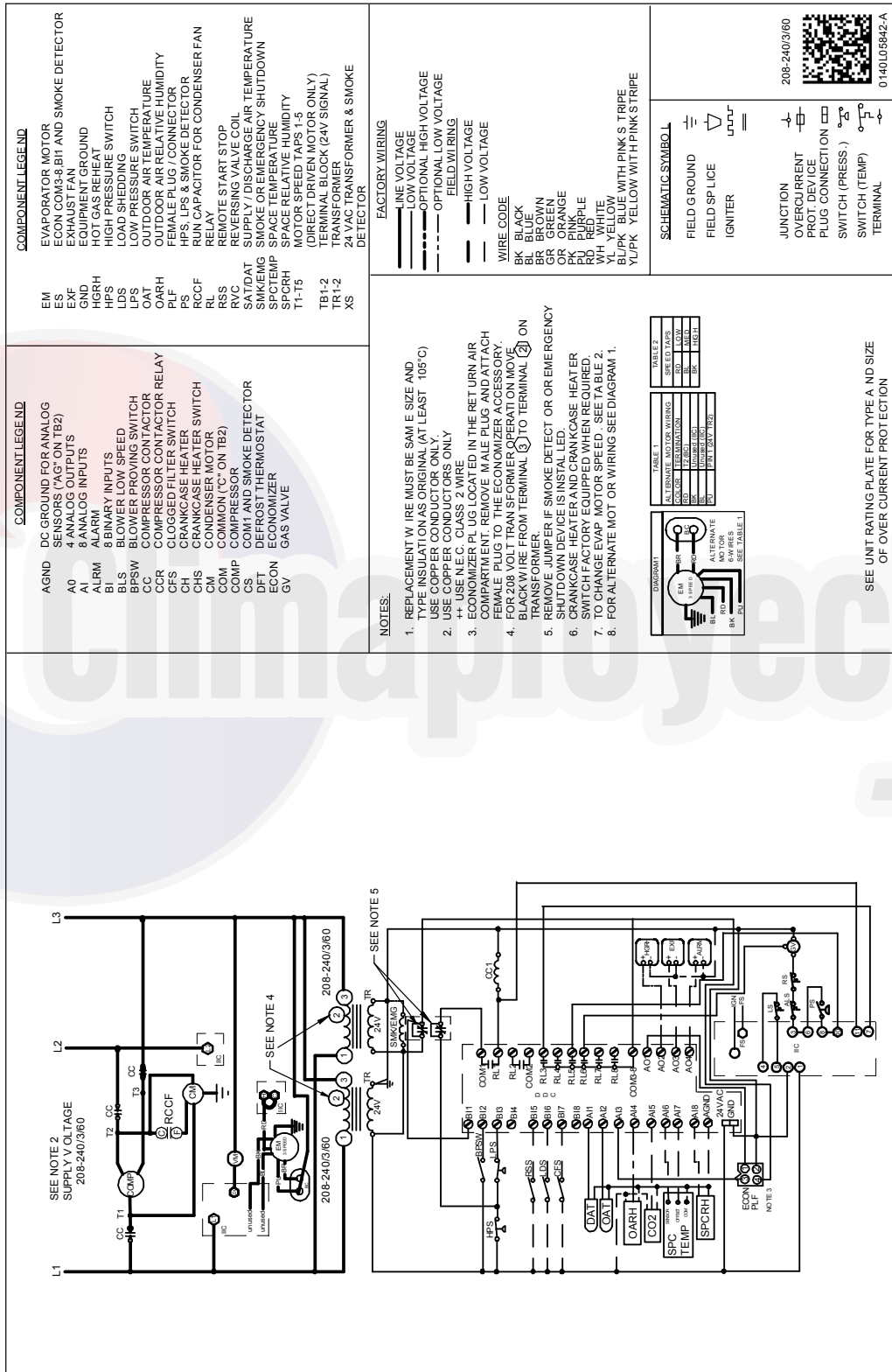


Wiring is subject to change. Always refer to the wiring diagram on the unit for the most up-to-date wiring.

WARNING

HIGH VOLTAGE!

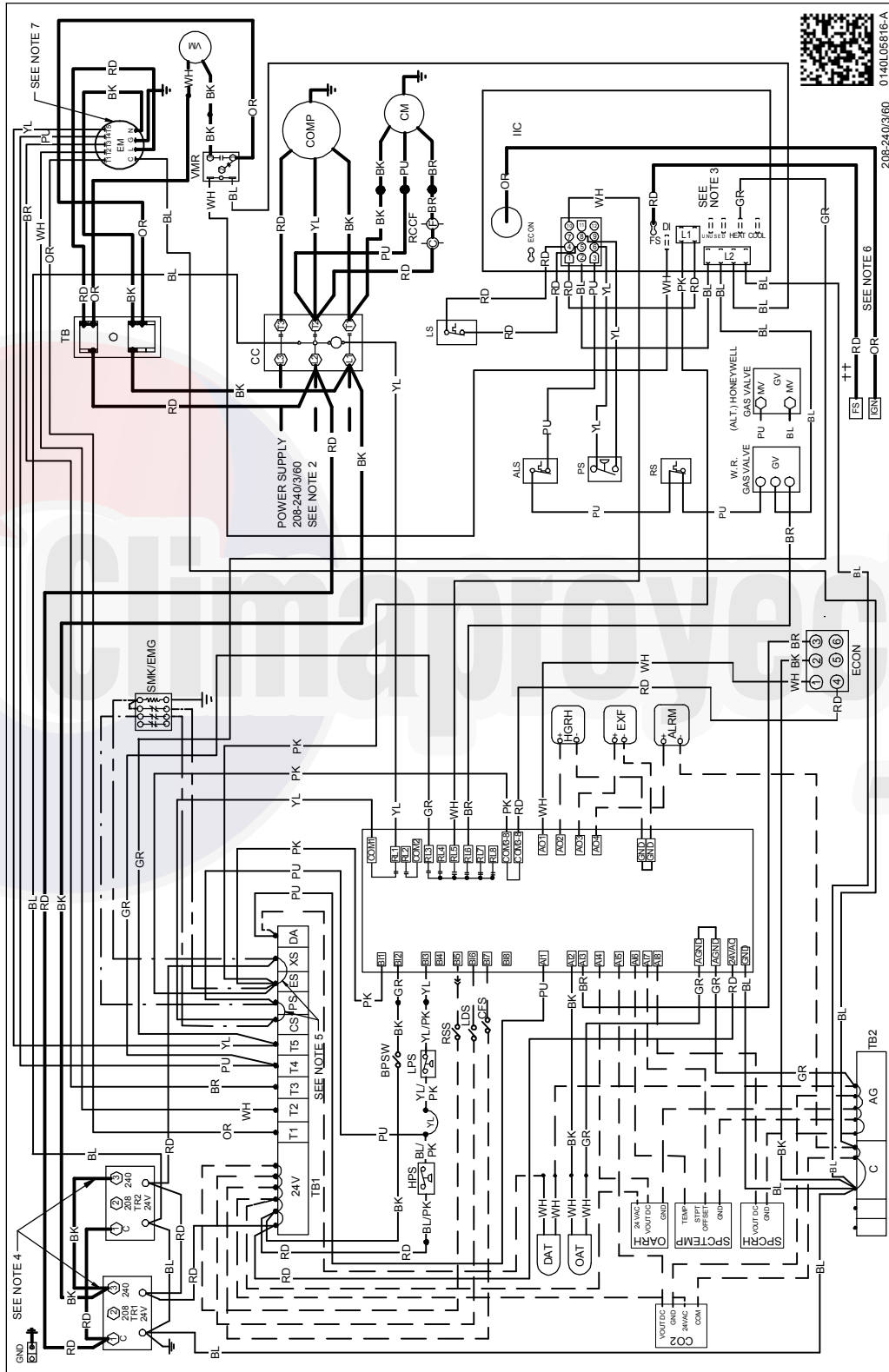
DISCONNECT ALL POWER BEFORE SERVICING OR INSTALLING THIS UNIT. MULTIPLE POWER SOURCES MAY BE PRESENT. FAILURE TO DO SO MAY CAUSE PROPERTY DAMAGE, PERSONAL INJURY OR DEATH.



Wiring is subject to change. Always refer to the wiring diagram on the unit for the most up-to-date wiring.

WARNING

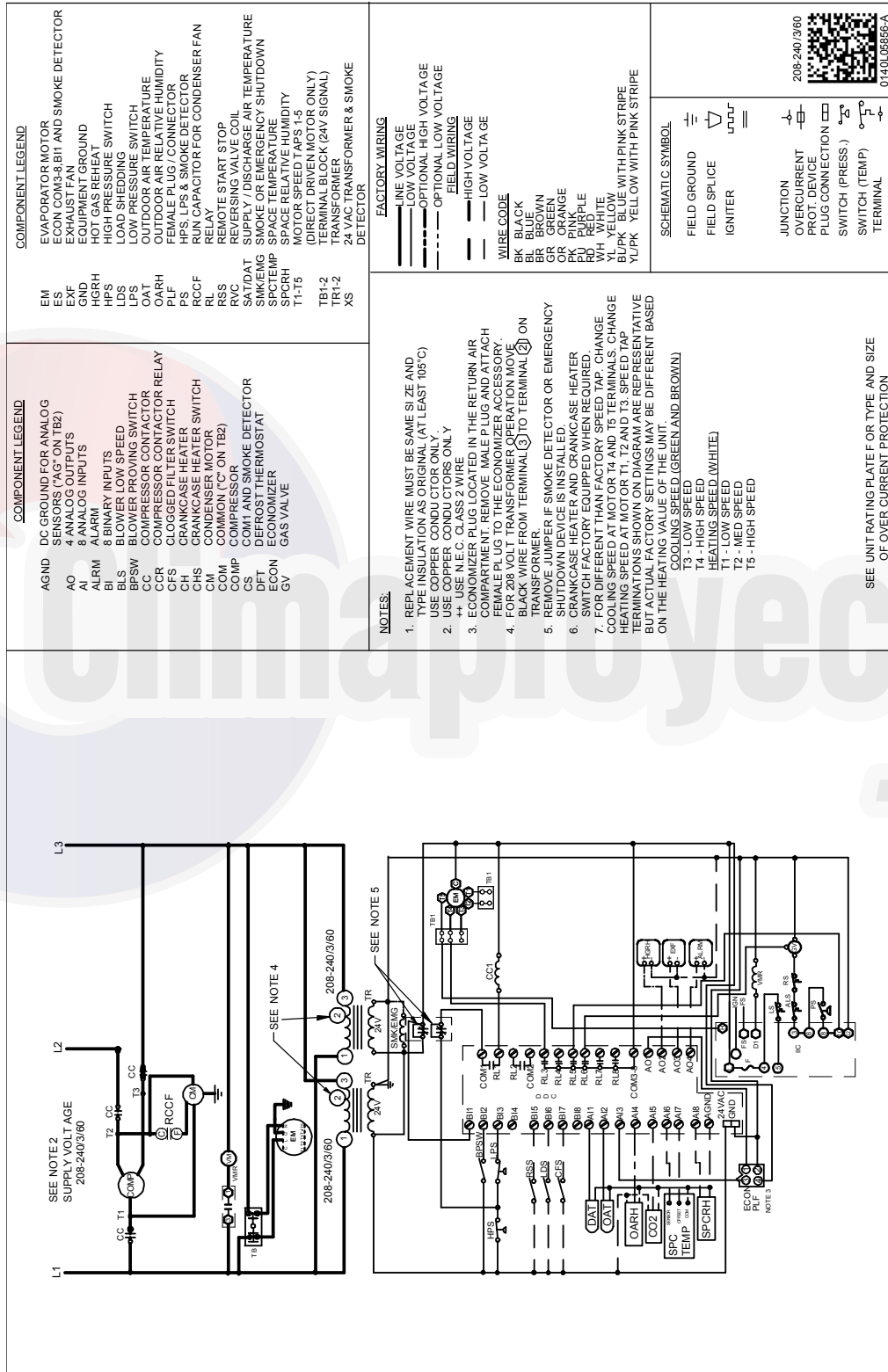
HIGH VOLTAGE!
 DISCONNECT ALL POWER BEFORE SERVICING OR INSTALLING THIS UNIT. MULTIPLE POWER SOURCES MAY BE PRESENT. FAILURE TO DO SO MAY CAUSE PROPERTY DAMAGE, PERSONAL INJURY OR DEATH.



Wiring is subject to change. Always refer to the wiring diagram on the unit for the most up-to-date wiring.

WARNING

HIGH VOLTAGE!
DISCONNECT ALL POWER BEFORE SERVICING OR INSTALLING THIS UNIT. MULTIPLE POWER SOURCES MAY BE PRESENT. FAILURE TO DO SO MAY CAUSE PROPERTY DAMAGE, PERSONAL INJURY OR DEATH.



Wiring is subject to change. Always refer to the wiring diagram on the unit for the most up-to-date wiring.

THIS PAGE LEFT BLANK
INTENTIONALLY.





Our continuing commitment to quality products may mean a change in specifications without notice.

© 2016 **DAIKIN COMPANY, L.P.**

5151 San Felipe St., Suite 500, Houston, TX 77056

www.daikincomfort.com